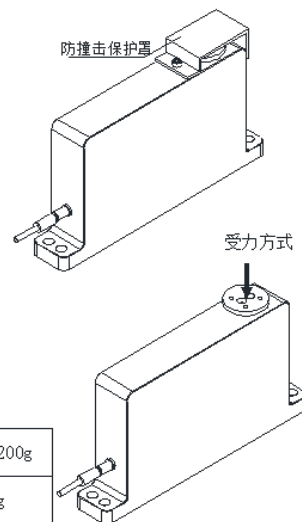
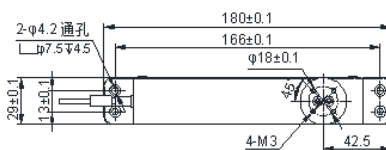
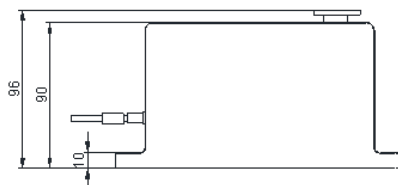


R546B

◆ 安装尺寸/Mounting Dimension



◆ 特点与用途/Features & Applications

- 铝合金材料
- 精度高、抗偏载能力强
- 容易安装, IP65
- 适用于电子秤、计数秤、电子天平及工业称重系统
- Made of aluminum alloy.
- High accuracy, high side load tolerance
- Easy to install, IP65 protection
- Mainly used for electronic scales, electronic balance, price computing scales and industrial weighing systems

量程	Capacity	10, 20, 30, 50g	100g, 200g
精度	Accuracy	0.001g	0.01g

◆ 参数 Specifications 技术指标/Technique

输出灵敏度	Rated output	1.8~2.0mV/V
零点输出	Zero balance	±0.1 mV/V
非线性	Non-linearity	0.015%F.S.
滞后	Hysteresis	0.015%F.S.
重复性	Repeatability	0.015%F.S.
蠕变 (30min)	Creep(5min)	0.01%F.S.
温度灵敏度漂移	Temp.effect on output	0.02%F.S./10°C
零点温度漂移	Temp.effect on zero	0.05%F.S./10°C
输入电阻	Input impedance	420 ± 20 Ω
输出电阻	Output impedance	350 ± 5 Ω
绝缘电阻	Insulation	≥5000MΩ/100VDC
激励电压	Recommended excitation	5V
最大激励电压	Maximum excitation	15V
温度补偿范围	Compensated temp range	-10~40°C
工作温度范围	Operation temp range	-10~50°C
安全超载	Safe overload	150%F.S.
极限超载	Ultimate overload	300%F.S.
电缆线尺寸	Cable size	Φ5×4000mm
单件重量	Weight approx.	0.2kg
材料	Material	aluminum alloy
防护等级	IP Class	IP65

◆ 配线图/Wiring Code

